

# DISCBINE® DISC MOWER-CONDITIONERS

DISCBINE 313 | DISCBINE 316 | H7220 | H7320 | H7230 | H7330



## THE DEFINITION OF DISC MOWER-CONDITIONERS

New Holland is well-known for its expertise in hay equipment, and the company's experience and leadership with Discbine® disc mower-conditioners is no exception. In fact, New Holland coined the term "Discbine®," which has become the popular name that's loosely used to refer to any disc mower-conditioner, regardless of brand. It's no surprise, because even in tough conditions, a genuine Discbine disc mower-conditioner swiftly turns heavy crop into fast-drying windrows or swaths. From the economical seven-disc model with a modest nine-foot cut-up, to the highly productive 10-disc model that quickly knocks down over 16-ft. per pass, an extensive model lineup provides numerous choices, making it easy to find a model that is suitable for your acreage and operation.



### A CUT ABOVE THE REST: MOWMAX™ AND MOWMAX™ II CUTTERBARS

H7000 Series models cutting up to 10' 4" feature the proven reliability and performance of the classic MowMax disc cutterbar. For the greatest capacity, Discbine® Series 313 and 316 center-pivot models feature the MowMax II disc cutterbar, a cutterbar designed for the higher demands of large harvesting operations. It incorporates the large discs and heavy-duty components also found on Durabine™ disc heads for New Holland Speedrower® self-propelled windrowers.



### 3-YEAR MOWMAX™ PROTECTION

You not only get the best disc cutting performance in the business with every Discbine disc mower-conditioner, you get the peace of mind of 36 months of internal cutterbar protection. Three full years of coverage on both the MowMax and MowMax II cutterbars includes the base one-year warranty on the full machine plus two years of additional protection on the cutterbar drive line components. It's another New Holland exclusive.



Model	Tractor Requirement	Cutterbar	Cutting Width	Tongue Design	Conditioning System
H7220	65 PTO hp	MowMax™	9' 2" (2.8 m)	Side-pull, straight tongue	Rubber rolls
H7320					LeaningEdge™ flails
H7230	80 PTO hp	MowMax™	10' 4" (3.2 m)	Side-pull, curved tongue	Rubber or steel rolls
H7330					LeaningEdge flails
Discbine® 313	90 PTO hp	MowMax II	13' 0" (4.0 m)	Center-pivot	Rubber or steel rolls or LeaningEdge flails
Discbine® 316	100 PTO hp		16' 3" (4.95 m)		



**CONDITIONING SYSTEMS FOR FAST DRYING**

You'll harvest crops quickly and produce nutritious, high-value feed with your choice of three conditioning systems. Choose the gentle conditioning of rubber chevron-intermeshing rolls that save delicate leaves, steel chevron rolls for winter forage or long-stem and cane grasses, or LeaningEdge™ flails for fast drying of grass hay.

**FAST AND SIMPLE IN-FIELD SERVICEABILITY**

MowMax and MowMax II cutterbars feature a true modular design for smooth, quiet, trouble-free mowing as well as fast and inexpensive servicing. Driven through individually sealed gearboxes with dedicated oil reservoirs, modules are never at risk for oil starvation while cutting on hillsides. In the event that your mower hits an obstruction, the exclusive New Holland ShockPRO™ hubs absorb harmful impacts, protecting the cutterbar drive from damage. Even better, they're quick to replace in the field so you can keep cutting when the weather is right. Accidents happen and in the event of a significant collision, the true modular MowMax concept fully contains damage to the affected module to minimize damage to the rest of the cutterbar. Break a knife? MowMax II cutterbars now feature optional QuickMax™ knives that provide you with the ability to change out knives in a matter of seconds.

## CLEAN AND RELIABLE MOWMAX™ CUTTING

H7000 side-pull Discbine® disc mower-conditioners mow cleanly and smoothly through tough conditions. Featuring the classic and reliable MowMax cutterbar, these Discbines have cutting widths of 9' 2" and 10' 4". Like the newer MowMax™ II cutterbar, the classic MowMax cutterbar features the New Holland true modular design with ShockPRO™ disc drive hubs.

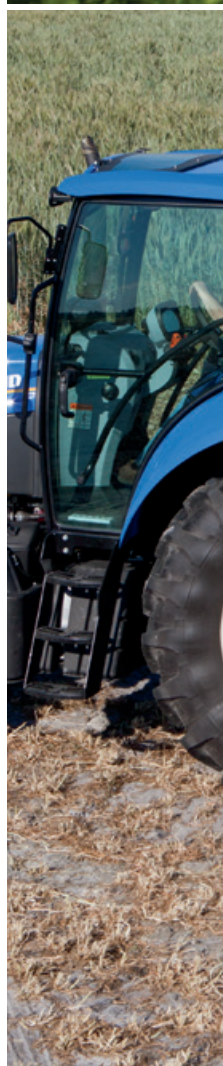


### THE SHOCKPRO™ ADVANTAGE

ShockPRO™ hubs save you hassle, time, and repair costs by heading off potential damage to gears and module drive shafts. They absorb the impact, protecting drive components, and are quick to replace in the field so you can keep mowing when the weather is right.

### MOWMAX CUTTERBARS: MAKING TALL HAYFIELDS LOOK LIKE CLOSE-CUT LAWNS

Close cutting is standard with all MowMax cutterbars. How close? Less than one inch, which makes your tall hayfields look like close-cut lawns after you're finished mowing. Low-profile-design rock guards allow the cutterbar to run at a shallower angle on the ground for less wear, less damage and a more consistent cut height. The Discbine header is suspended independently from the trail frame, allowing it to closely follow changing ground contours and reducing stubble damage and skid shoe wear. Use the adjustable header flotation springs and the 2- to 10-degree cutting angle adjustment to cut your valuable crop. A mechanical cutting angle adjustment is standard on 9' 2" models, but a hydraulic control is provided as standard on 10' 4" models for precision on-the-go cutting height adjustments.





## WHICH MODEL IS RIGHT FOR YOU?

### H7220 AND H7320

The smallest models of the Discbine family, the H7220 and H7320, provide a 9' 2" cutting width and narrow transport, which is ideal for mowing tight spaces and passing through narrow entrances. The H7220 features a chevron-design intermeshing rubber-roll conditioning system, while the H7320 comes with a LeaningEdge™ flail conditioner. The 540-rpm drive and low horsepower requirement mean you can mow and condition your crop for fast drying with as little as 65 PTO horsepower. A straight tongue with a clevis hitch is featured on both models.



### H7230 AND H7330

These two models make a 10' 4" cut and require only 80 PTO horsepower for operation. H7230 mowers offer the choice between a chevron-style intermeshing steel or rubber roll conditioning system, while the H7330 is equipped with the LeaningEdge flail system. A curved tongue with a clevis hitch is featured on both models. Looking to make sharper turns? A two-point swivel hitch or drawbar swivel hitch (shown) are also available to provide 90° turns while eliminating tire scuffing and making headland turns easier. The swivel gearbox maintains the PTO angle straight through the turn, eliminating constant velocity joints and extending driveline life and reliability.

## YOUR CHOICE OF PROVEN ROLL OR FLAIL CONDITIONING SYSTEMS

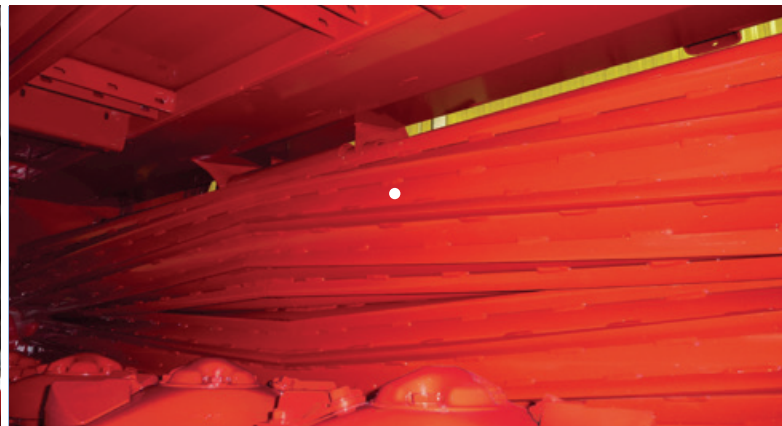
### CHEVRON INTERMESHING RUBBER ROLLS

Gentle chevron rubber intermeshing rolls provide full-stem crimping and cracking with a scrubbing action while handling the leaves of high-value feeds delicately, making it the ultimate solution for alfalfa and clover. This is possible because of the large 10.4-inch roll diameter, the rubber compound, the intermeshing fit and profile of the lugs. These features work together to grip the crop and generate an even flow of crop through the rolls to provide an even spread into fast drying swaths or windrows.



### CHEVRON INTERMESHING STEEL ROLLS

Durable chevron steel intermeshing rolls are designed for use with all crops, but show a real advantage in cane-type crops, grain forage crops and extra-tall grass crops. The chevron pattern of the steel lugs provides aggressive full-stem crimping, smooth crop flow, and even distribution into fast drying swaths or windrows. Rugged all-steel roll construction resists wear better than rubber, providing a long life even in highly abrasive conditions.



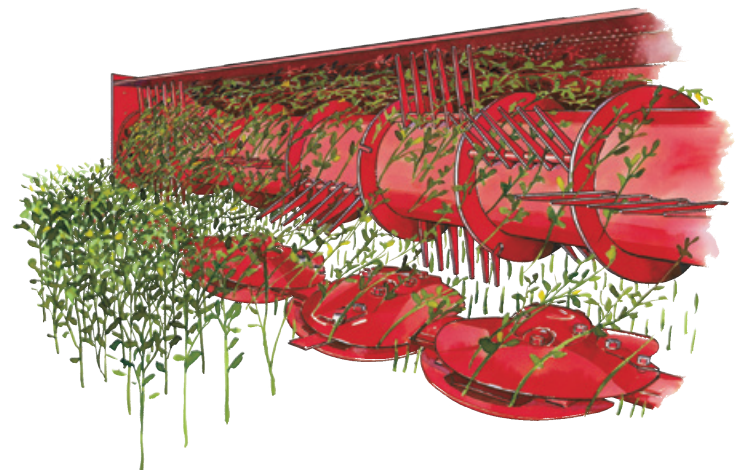
### TORSION-BAR ROLL PRESSURE

Year after year, New Holland's torsion-bar roll-pressure system is proven to be the most effective design for delivering consistent, thorough conditioning. The no-tools-required hand crank makes it easy to tailor roll pressure to the crop without crawling under the machine with wrenches. The unique, over-center linkage momentarily relieves roll pressure, allowing crop slugs or foreign objects to pass without plugging for non-stop mowing.



### LEANINGEDGE™ FLAILS

For fast drying of grass hay, choose New Holland **LeaningEdge** flail conditioning. The 20-degree tangent of LeaningEdge flails creates more outward pressure, pushing crop against the adjustable conditioning hood for more thorough conditioning. The semi-swinging design ensures crop is released at the ideal moment to form uniform, fast-drying swaths or windrows. For lighter conditioning of delicate crops, raise the hood away from the flails. Or, for maximum conditioning, lower the hood to increase the crop friction. An optional textured hood liner offers even more aggressive conditioning of difficult crops. For more delicate handling of legumes and delicate grasses, an optional slow-speed kit is also available for the LeaningEdge flail conditioning system.



# H7000 DISCBINE® SPECIFICATIONS

MODEL		H7220	H7320	H7230	H7330
<b>Cutterbar</b>					
Cutting width	ft. in. (m)	9' 2" (2.8)	9' 2" (2.8)	10' 4" (3.16)	10' 4" (3.16)
Cutterbar model		MowMax™ with ShockPRO™ hubs			
Type		Modular	Modular	Modular	Modular
Number of discs		7	7	8	8
Knives per disc		2	2	2	2
Disc speed @ 1000 rpm PTO speed	rpm	3,000	3,000	3,000	3,000
Tilt angle	degrees	2-10	2-10	2-10	2-10
Flotation		Vertical and lateral, adjustable springs			
Drive method		PTO drive w/slip clutch to bevel gearbox to LH end of header, vertical PTO shaft to cutterbar			
Cutting height	in. (mm)	0.95-3.2 (24-81)	0.95-3.2 (24-81)	0.95-3.2 (24-81)	0.95-3.2 (24-81)
<b>Conditioners</b>					
Type		Chevron intermeshing rubber rolls	Flail rotor with 90 tapered flails	Chevron intermeshing rubber or steel rolls	Flail rotor with 100 tapered flails
Length	in. (mm)	90 (2286)	90 (2286)	102 (2591)	102 (2591)
Diameter	in. (mm)	10.4 (264)	22 (560)	10.4 (264)	22 (560)
Drive method		4 HB V-belt and enclosed gears	4 HB V-belt	4 HB V-belt and enclosed gears	4 HB V-belt
Speed	rpm	647	1016 std. 730 opt.	635	1000 std. 718 opt.
Conditioner roll tension adjustment		Single crank	–	Single crank	–
Conditioner gap adjustment		Adjustable drawbolt stop, each end	Adjustable rotor hood	Adjustable drawbolt stop, each end	Adjustable rotor hood
<b>Crop Discharge</b>					
Swath width	ft. (mm)	6 (1.8)	6 (1.8)	7 (2.1)*	7 (2.1)*
Windrow width	ft. (mm)	3-6 (.91-1.8)	3-6 (.91-1.8)	3-7 (.91-2.1)	3-7 (.91-2.1)
<b>Driveline</b>					
Input speed		540 or 1,000 (540 only with swivel hitches)			
Driveline protection		Slip clutch and overrunning clutch assembly			
<b>Tongue Options</b>					
Tongue type		Side-pull straight tongue	Side-pull straight tongue	Side-pull curved tongue	Side-pull curved tongue
Hitch type		Standard hitch	Standard hitch	Standard hitch, drawbar swivel, or 2-point swivel	
<b>Tractor Requirements</b>					
Minimum PTO power required	hp (kW)	65 (48)	65 (48)	80 (60)	80 (60)
Hydraulic circuits required		2	2	2	2
Minimum relief pressure required	psi (bar)	1,500 (103)	1,500 (103)	1,500 (103)	1,500 (103)
Drawbar		ASAE Category II	ASAE Category II	ASAE Category II	ASAE Category II
Electrical		7-pin electrical connector for transport lights			
<b>Tires</b>					
Tubeless ag rib implement tires		9.5L x 14 6PR	9.5L x 14 6PR	11L x 15 6PR	9.5L x 14 6PR
<b>Transport Speed</b>					
Max road speed	mph (kph)	20 (32)	20 (32)	20 (32)	20 (32)
<b>Dimensions**</b>					
Width-transport	ft. in. (m)	9' 11" (3.0)	9' 11" (3.0)	11' 3" (3.4)	11' 3" (3.4)
Width-operating	ft. in. (m)	14' 10" (4.52)	14' 10" (4.52)	16' 0" (4.6)	16' 0" (4.6)
Length-transport	ft. in. (m)	17' 7" (5.3)	17' 7" (5.3)	17' 7" (5.3)	17' 7" (5.3)
-with swivel hitch		–	–	19' 9" (6.0)	20' 3" (6.2)
Length-operating	ft. in. (m)	17' 2" (5.2)	17' 2" (5.2)	17' 2" (5.2)	17' 8" (5.4)
-with swivel hitch		–	–	19' 4" (5.9)	19' 10" (6.0)
Height-transport	ft. in. (m)	5' 8" (1.7)	5' 8" (1.7)	5' 8" (1.7)	5' 8" (1.7)
Height-operating	ft. in. (m)	4' 5" (1.3)	4' 5" (1.3)	4' 5" (1.3)	4' 5" (1.3)
Ground clearance with head fully raised	in. (mm)	17 (432)	17 (432)	18 (457)	17 (432)
<b>Weights</b>					
Operating weight	lbs. (kg)	3,690 (1674)	3,740 (1696)	4,165 (1889)	4,065 (1844)

– Not Available

\* With wide thin fin kit

\*\*Rear curtain up for all height and length measurements on machines with flail conditioners. Windrow shields fully open for length in both positions. Standard drawbar hitch used for measurements unless indicated.

## CLOSER CUTTING. FASTER DRYDOWN. INCREASED DURABILITY.

Center-pivot Discbines are redefining the disc mower-conditioner industry by taking mowing performance to new levels. The 13-foot Discbine 313 and 16-foot, three-inch Discbine 316 are designed with increased durability and features that lead to cleaner cutting, more efficient crop flow, and smoother, more effective conditioning.



### MOWMAX™ II LARGE-DISC CUTTERBAR

Originally featured on Durabine™ heads used on Speedrower® self-propelled windrowers, the rugged MowMax™ II cutterbar features larger gears, bearings, interconnecting shafts, and big 24.3-inch discs for maximum durability. All interconnecting drive shafts feature a cut spline and are heat treated for maximum durability. A larger and heavier ShockPRO™ hub completes the drive components to protect the cutterbar driveline for maximum uptime.

### THE BENEFITS OF BIG DISCS

A larger disc diameter allows for closer cutting with less cutterbar tilt for consistent cutting height without scalloping. You can easily adjust cutting height hydraulically from  $\frac{3}{4}$  to 2- $\frac{3}{4}$  inches with standard skid shoes. The increased surface area of the larger discs and the “tapered skirt” disc profile provide a smoother transition of crop to the conditioner for more uniform conditioning and reduced power consumption. Enhanced durability is built into the design with heavy, full-coverage, cast rock guards for ample protection.

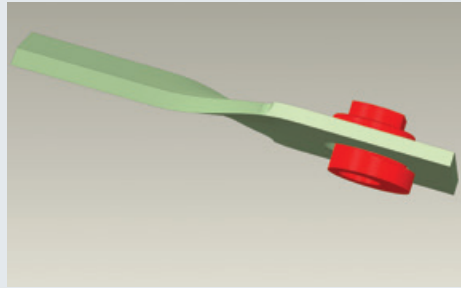




## QUICKMAX™ BLADE-CHANGE SYSTEM

Time is precious when you're making hay, and the new QuickMax system allows you to quickly change damaged knives or flip an entire set so you're back clean-cutting quickly. Because the QuickMax system allows you to change knives with discs at a 45-degree angle to the cutterbar, you can change blades in just one-half rotation of the cutterbar, saving you time compared to traditional bolted knives and other quick-change systems. Patented New Holland knife-lock technology assures knife retention in the most difficult conditions. Best of all, the system does not require the use of special blades; it works with all approved New Holland knives. The QuickMax system is available for all MowMax™ II disc cutterbars as a factory option or you can upgrade your current machine by contacting your authorized New Holland dealer.

### HOW IT WORKS:



#### PATENTED ECCENTRIC KNIFE NUT DESIGN

A notch on the back of each blade attachment nut ensures best-in-class knife retention.



#### UNIQUE BLADE-CHANGE TOOL

The tool pries the spring plate down to release the knife from the patented knife nut, quickly releasing each blade. Check for wear of the knife nut with the integrated gauge on the tool. Flip the existing blade or swap it out for new, then stow the special tool on board your Discbine™ 313 and 316 models for quick in-field blade changes.



#### UNIQUE ROCK GUARDS

Every new MowMax™ II cutterbar features specialized rock guards to accommodate the QuickMax tool. The specialized design allows you to change knives by rotating the disc just 180 degrees one time instead of the four individual disc rotations required on competitive models.

## IMPROVED CROP FLOW

### REDUCED CROP CONVERGENCE

Converging disc modules have been eliminated on the Discbine 313 and reduced to just one pair on each end of the Discbine 316. This greatly improves crop flow and improves the transition of cut crop to the conditioner, which means cleaner cutting on the ends and with more uniform conditioning.



### MORE RESPONSIVE FLOTATION

Improved header suspension geometry contributes to more responsive flotation. The innovative header linkage allows the header to move up and rearward to dissipate force should you encounter an obstacle. To provide for free flotation of the head, the flotation springs are anchored to the trail frame with a ball-joint to reduce binding as the header moves through its full flotation range. In addition, tires and rims are located to the inside of the frame, allowing for better contour following on uneven terrain.



### SIMPLIFIED DRIVELINES

The new MowMax II cutterbar's smart design allows driving the cutterbar from only one end, which simplifies maintenance and leaves the top of the header uncluttered. All u-joints are easily accessible for servicing, and the lube interval has been extended to 50 hours so you spend less time on maintenance.



### CONTROLLED CROP DRYING

The Discbine 313 and 316 allow you to lay down a wide swath for more sun exposure and better natural drying. Wedges are mounted on the rear swath board to help spread the crop mat. Customize your windrow and swath formation using the longer, adjustable windrow shields and the adjustable swath gate. A new spring-assist lever makes it easy to change swath gate position, and rubber flashing prevents swath gate material buildup.

### SIMPLE MAINTENANCE. EASIER ACCESS.

New Holland makes it easy to reach the cutting discs and drive components on every Discbine disc mower-conditioner. Access is even easier on the center-pivot Discbine 313 and 316. Poly bifold upper shields are light, foldable and easy to lift, and they're more impact-resistant to dents from foreign objects. The driven-end access steel door is double layered to resist denting in that area too. Material overlap keeps curtains in place without the need for clips or magnets.



### SWIVEL HITCH OPTIONS

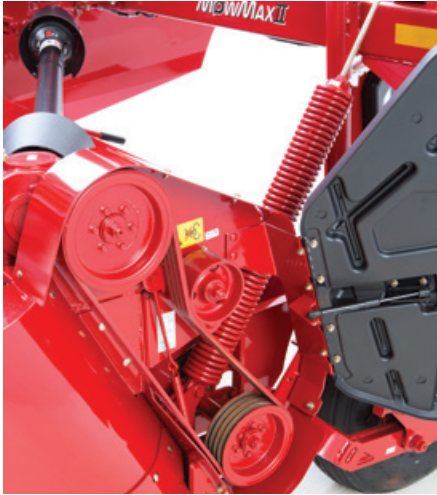
Choose either the drawbar swivel hitch or two-point swivel hitch and get maximum turning performance with zero driveline wrap-up. PTO power is transferred from the front swivel gearbox to a second swivel gearbox at the rear of the tongue that maintains perfect alignment of the output driveshaft to the cutterbar- and conditioner-drive gearbox on the left side of the unit.



## WIDE SWATHS. FAST, EVEN DRYING.

# WIDEDRY

New Holland's best-in-class WideDry™ conditioning systems are over 22% wider than the conditioning systems on previous Discbine models. This results in a thinner crop mat that feeds smoothly through the conditioning system. Uniform conditioning aids in faster drying in the field. The crop transitions more smoothly from the cutterbar to the conditioning system, reducing crop feeding issues, particularly in thick grasses, cane, and other high-volume crops. Choose from chevron-patterned intermeshing rubber or steel rolls, or LeaningEdge™ flails to suit your conditioning needs.



### CONDITIONING SPEED ADJUSTMENTS

Roll conditioning systems generate air movement that can blow lighter crop away from the cutterbar and adversely affect cutting quality. To help prevent this, you can slow roll speed from 750 rpm to 640 rpm by switching the sheaves on the roll drive. The decreased roll speed minimizes air bursts while maintaining cutterbar speed to provide excellent cut quality in light crop conditions.



# DISCBINE® 313 & 316 SPECIFICATIONS

MODEL		DISCBINE 313	DISCBINE 316
<b>Cutterbar</b>			
Cutting width	ft. in. (m)	13' 0" (4.0)	16' 3" (4.95)
Cutterbar model		MowMax™ II with ShockPRO™ hubs	MowMax™ II with ShockPRO™ hubs
Type		Modular	Modular
Number of discs		8	10
Knives per disc		2	2
Disc speed @ 1,000 rpm PTO speed	rpm	2,250	2,250
Tilt angle	degrees	2-10	2-10
Flotation		Vertical and lateral, adjustable springs	Vertical and lateral, adjustable springs
Drive method		PTO drive w/slip clutch to bevel gearbox to LH end of header, vertical PTO shaft to cutterbar	
Cutting height	in. (mm)	0.79-2.7 (20-69)	0.79-2.7 (20-69)
Cutting height w/ opt. high-stubble shoes	in. (mm)	3.1-5.5 (79-140)	3.1-5.5 (79-140)
Cutting height w/ opt. Biomass shoes	in. (mm)	4.9-7.8 (124-198)	4.9-7.8 (124-198)
Cutting height w/ opt. adjustable shoes	in. (mm)	0.79-5.8 (20-147)	0.79-5.8 (20-147)
<b>Roll Conditioners</b>			
Type		Chevron intermeshing rubber or steel rolls	Chevron intermeshing rubber or steel rolls
Length	in. (mm)	125 (3175)	125 (3175)
Diameter	in. (mm)	10.4 (264)	10.4 (264)
Drive method		4 HB V-belt and enclosed gears	4 HB V-belt and enclosed gears
Speed	rpm	750 or 640	750 or 640
Conditioner roll tension adjustment		Single crank	Single crank
Conditioner gap adjustment		Adjustable drawbolt stop, each end	Adjustable drawbolt stop, each end
<b>Leaning Edge Flail Conditioners</b>			
Type		Flail rotor with 120 tapered flails	Flail rotor with 120 tapered flails
Length	in. (mm)	125 (3175)	125 (3175)
Diameter	in. (mm)	22 (560)	22 (560)
Drive method		4 HB v-belt	4 HB v-belt
Speed	rpm	1042 std. 752 opt.	1042 std. 752 opt.
Conditioner gap adjustment		Single crank adjustable rotor hood	Single crank adjustable rotor hood
<b>Crop Discharge</b>			
Swath width	ft. (m)	10 (3.0)	10 (3.0)
Windrow width	ft. (m)	3-8 (0.9-2.4)	3-8 (0.9-2.4)
<b>Driveline</b>			
Input speed	rpm	1000	1000
Driveline protection		Slip clutch and overrunning clutch assembly at rear of PTO shaft	
<b>Tongue Options</b>			
Type		Center pivot straight hitch	Center pivot straight hitch
Hitch type		Drawbar swivel or 2-point swivel	Drawbar swivel or 2-point swivel
<b>Tractor Requirements</b>			
Minimum PTO power required	hp (kW)	90 (67)	100 (75)
Hydraulic circuits required		2	2
Minimum relief pressure required	psi (bar)	1,500 (103)	1,500 (103)
Drawbar		ASAE Category II or III	ASAE Category III
3 pt hitch (swivel models)		Category III	Category III
Electrical		7-pin electrical connector for transport lights	7-pin electrical connector for transport lights
<b>Tires</b>			
Tubeless ag rib implement tires		12.5L x 15 8PR	12.5L x 15 8PR
<b>Transport Speed</b>			
Max road speed	mph (kph)	20 (32)	20 (32)
<b>Dimensions*</b>			
Width-transport	ft. in. (m)	13' 4" (4.04)	16' 7" (5.05)
Width-operating (2 pt swivel hitch)	ft. in. (m)	21' 3" (6.5)	25' 7" (7.8)
-operating (drawbar swivel hitch)		19' 7" (6.0)	23' 11" (7.3)
Length-transport (2 pt swivel hitch)	ft. in. (m)	27' 5" (8.4)	32' 0" (9.7)
-transport (drawbar swivel hitch)		26' 5" (8.1)	31' 0" (9.4)
Length-operating (2pt swivel hitch)	ft. in. (m)	23' 0" (7.0)	26' 7" (8.1)
-operating (drawbar swivel hitch)		22' 0" (6.7)	25' 7" (7.8)
Height-transport	ft. in. (m)	7' 5" (2.26)	7' 5" (2.26)
-operating		6' 7" (2.01)	6' 7" (2.01)
Ground clearance with head fully raised	in. (mm)	16.2 (411)	16.2 (411)
<b>Weights**</b>			
Operating weight		6,275 (2846)	6,700 (3039)

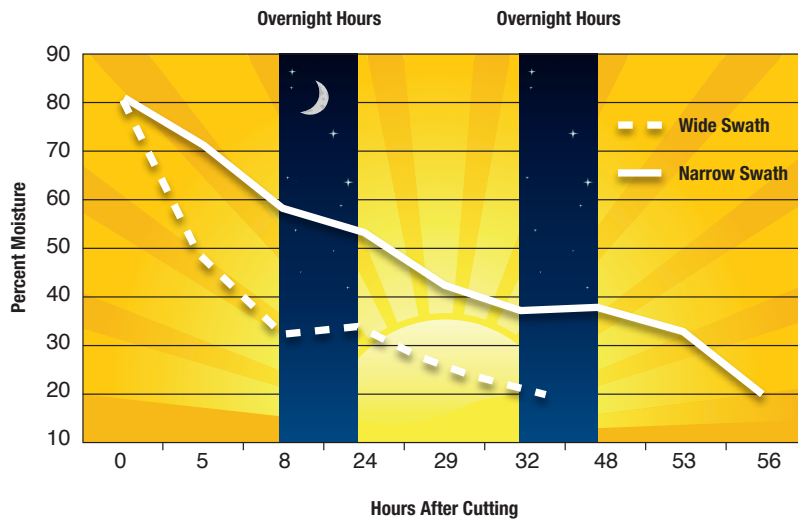
\*Rear curtain down for all height and length measurements on machines with flail conditioners. Subtract 2" (50.8 mm) for flail curtain up. Windrow shields fully open for length in both positions.

\*\*Weights with rubber conditioning rolls. Add 100 lbs. (45 kg) for steel rolls.

# CUSTOMIZE YOUR DISCBINE® PERFORMANCE

## EASY SWITCH FROM SWATH TO WINDROW

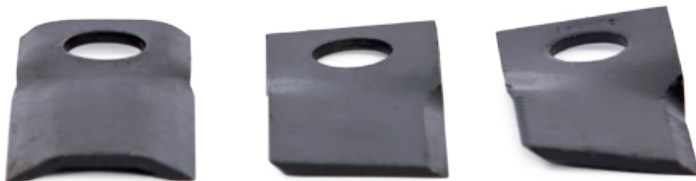
All Discbine models feature fast and easy windrow shield and swath gate adjustments, without tools, so you can quickly adjust to crop and moisture conditions and your harvesting method. Spread the cut crop in a fast-drying swath or into a tight, three-foot-wide windrow that's ready to bale or chop.



[Source: University of Wisconsin-Extension, Arlington, WI, July 30 and 31, 2007]

## THE ADVANTAGES OF SPREADING WIDE AND THIN

University tests confirm that the more leaves are exposed to the sun, the faster crops dry and the more feed value is retained. Quick drying reduces sun bleaching and gives you an advantage when you need to beat the weather and bale or chop before the rain. The WideDry™ conditioning system and swath board wedges featured on the center-pivot Discbine 313 and 316, spread the crop wide and thin. For H7000 Series models, a wide and thin crop-spreading deflector kit is available to spread crop to the full width of cut, exposing more crop to the sun and providing faster drying. The kit is fitted to the swath gate with the windrow shields removed. Visit your New Holland dealer for complete details.



## REPLACEMENT KNIVES TO MATCH CROP AND SOIL CONDITIONS

All knives feature two cutting edges and can be flipped for double the cutting life.

- 14-degree smooth knives are standard and provide the best choice and value for most conditions.
- 14-degree serrated knives offer extended wear in abrasive conditions.
- 18-degree smooth knives (Discbine 313 and 316 only) are more effective in down crop conditions by providing more crop lift.
- 18-degree serrated knives (Discbine 313 and 316 only) offer an advantage in down crops as well as extended wear in abrasive conditions.
- 7-degree smooth knives offer clean cutting with less ash content, and will reduce crop blow down in light or short crops.
- Rock knives are designed for durability in rocky/stony conditions.





### A WIDE SELECTION OF SKID SHOES

Numerous skid shoes are available to match your cutting needs.

Skid Shoe Types	Cutting Height H7000 Series Models	Cutting Height Discbine 313/316
Fixed Height (standard)	1 – 3 ¼ inches	¾ – 2 ¾ inches
Adjustable option	Not Available	¾ – 5 ¾ inches
High-Stubble option	2 ¼ – 4 ½ inches	3 – 5 ½ inches
BioMass option (extra-high)	Not Available	5 – 7 ¾ inches

### BIOMASS KIT

When working in energy crops like cane, switch grass or corn stover, order the biomass kit on Discbine 313 and 316 models. This kit includes extra-high skid shoes for the increased cut height and longer stubble desired in these crops. Lift lock out channels stop the cylinders mid-stroke to maintain good flotation, even when cutting well off of the ground. A separate pushbar kit is available to push tall crops forward and maintain cut quality.



# VALUE, SERVICE AND SOLUTIONS

There's a certain way of thinking that comes from living on a farm. Farming takes equal parts brain and brawn. Not to mention thick skin, calloused hands and a fair share of know how. Seasoned farmers know it helps to have equipment that's built by farmers, sold by farmers and used by farmers.

**Support at every step.** When you place your confidence in New Holland agricultural equipment, you get the finest in local support. Your New Holland dealer understands the many challenges you face and stands behind you at every step with the equipment, parts, service and financial solutions to make your job easier. Look to New Holland for a complete selection of equipment, including a full line of tractors, hay & forage equipment, harvesting, crop production and material handling equipment.

**Quality parts and service.** Turn to your New Holland dealer after the sale for expert, factory-trained service and genuine New Holland-branded parts. Your dealer has the very latest service updates and training to ensure your equipment keeps working productively season after season.

**Financing solutions.** Your New Holland dealer can tell you about smart ways to turn your financial challenges into opportunities with a portfolio of innovative financial services available through CNH Industrial Capital, including customized financing, leasing, insurance and the purchasing convenience of a Commercial Revolving Account.

For reliable equipment, parts and service — or just honest advice on farming and finance — turn to New Holland and your trusted New Holland dealer. We know. We're farmers, too.



We are proud to support the FFA.

Learn more at [www.newholland.com/na](http://www.newholland.com/na)

Design, materials and/or specifications are subject to change without notice and without liability therefor. Specifications are applicable to units sold in Canada, the United States, its territories and possessions, and may vary outside these areas.

© 2014 CNH Industrial America LLC. All rights reserved. New Holland is a trademark registered in the United States and many other countries, owned by or licensed to CNH Industrial N.V., its subsidiaries or affiliates. Any trademarks referred to herein, in association with goods and/or services of companies, other than owned by or licensed to CNH Industrial N.V., its subsidiaries or affiliates, are the property of those respective companies.



Safety begins with a thorough understanding of the equipment. Always make sure you and your operators read the Operator's Manual before using the equipment. Pay close attention to all safety and operating decals and never operate machinery without all shields, protective devices and structures in place.